



▶ **2020 CENSUS AND
REDISTRICTING
SCENARIOS**

SOLANA BEACH SCHOOL DISTRICT

FEBRUARY 10, 2022



**COOPERATIVE
STRATEGIES**
ASSESS • PLAN • FUND • BUILD

▶ CONSIDERATIONS IN VOTING AREAS



Each area shall contain nearly equal number of inhabitants



Follow man-made and natural geographic features, as much as possible



Drawn to comply with the Federal Voting Rights Act



Respect incumbency, if possible



Compact and contiguous, as much as possible



Other local considerations



Respect communities of interest, as much as possible

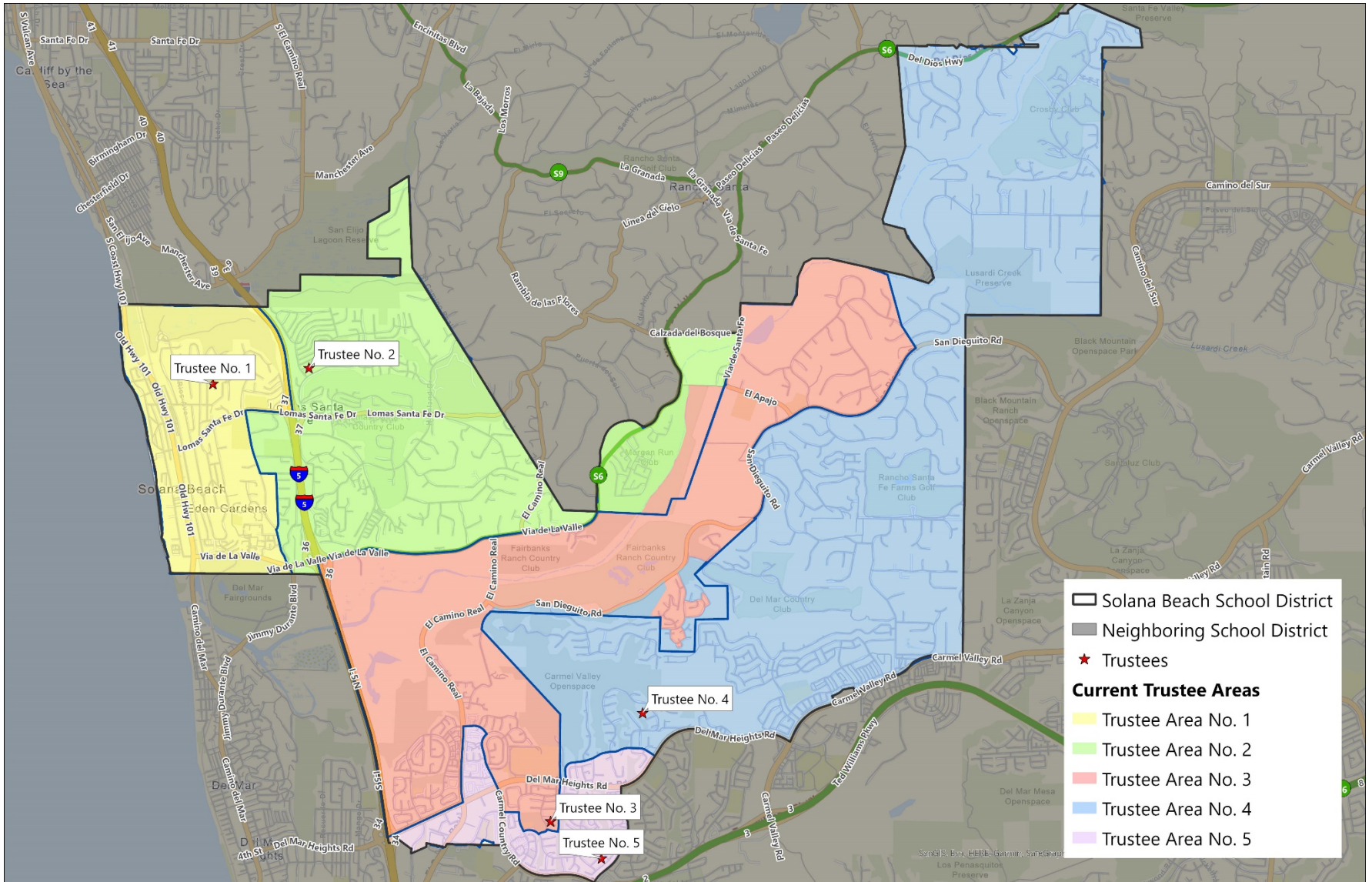
▶ **DISTRICT DEMOGRAPHICS**
2020 CENSUS DATA



- The overall variance is calculated by subtracting the least populated Trustee Area (6,831) from the most populated (11,088) and dividing the result by the ideal (8,288)
- The ideal population is the total Population divided by the number of trustees
- Variance of individual Trustee Areas are calculated by subtracting the population from the ideal and dividing the result by the ideal population.

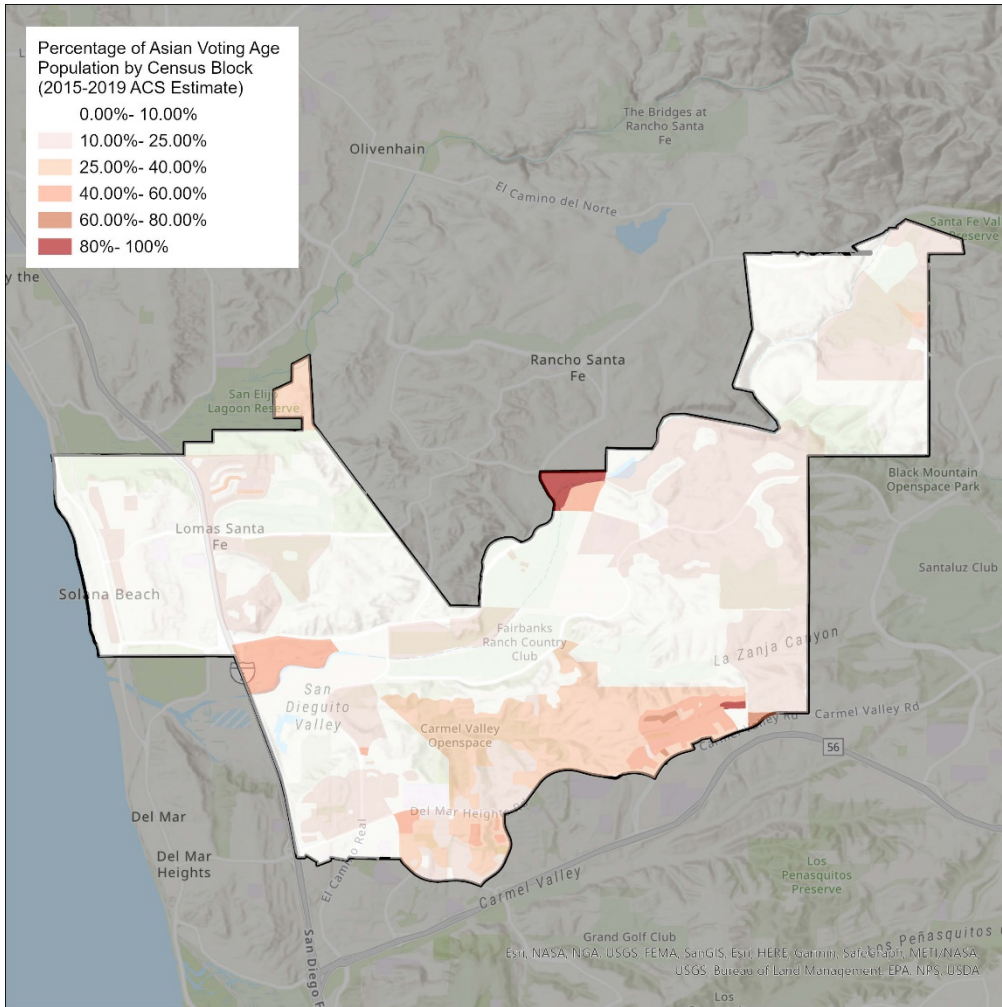
Trustee Area	2010 Census		2020 Census	
	Total	Variance	Total	Variance
Trustee Area No. 1	7,602	1.5%	7,539	-9.0%
Trustee Area No. 2	7,767	3.7%	8,218	-0.8%
Trustee Area No. 3	7,561	1.0%	7,764	-6.3%
Trustee Area No. 4	7,115	-5.0%	11,088	33.8%
Trustee Area No. 5	7,400	-1.2%	6,831	-17.6%
Total Population	37,445	8.7%	41,440	51.4%

▶ CURRENT TRUSTEE AREAS



▶ DISTRICT DEMOGRAPHICS

ASIAN CITIZEN VOTING AGE POPULATION ESTIMATES

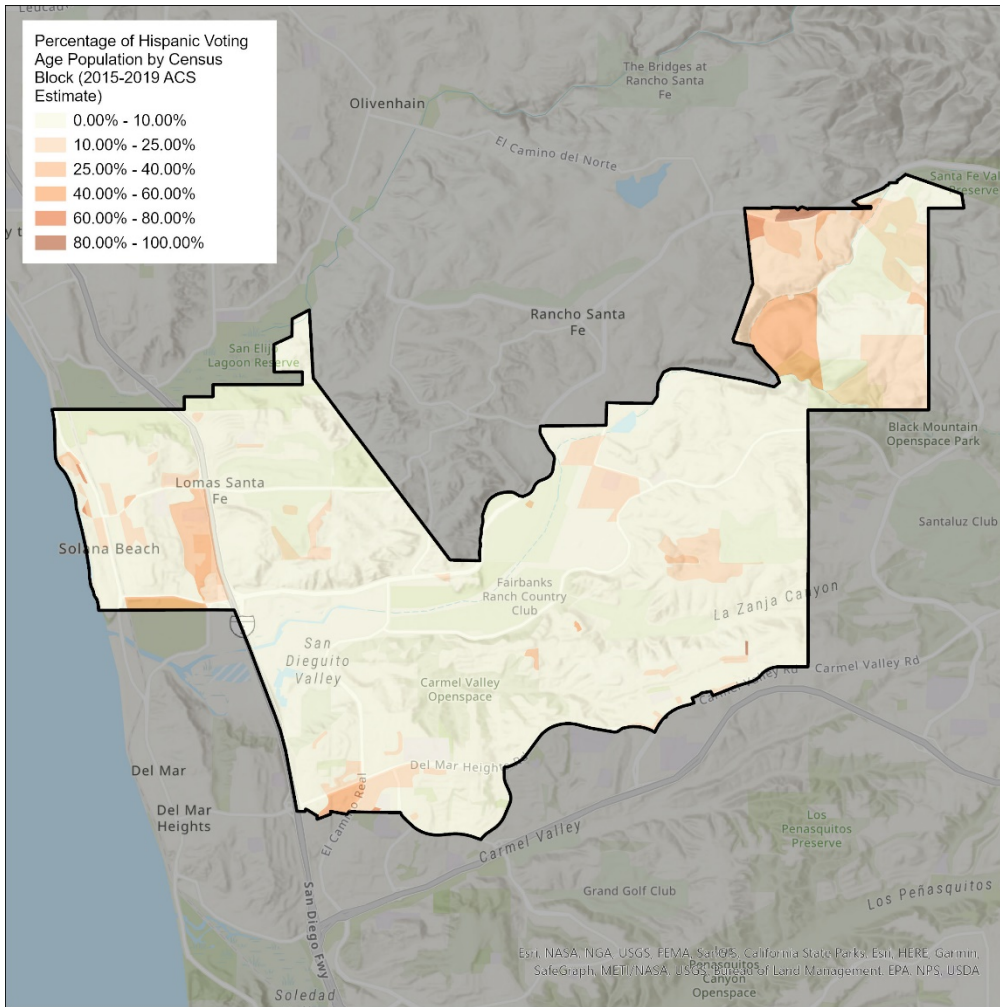


Population	CVAP 2015-2019	
	Total	%
Hispanic/Latino	1,988	7.7%
White	19,685	75.8%
Black/ African American	180	0.7%
American Indian/Alaska Native	15	0.1%
Asian	3,530	13.6%
Native Hawaiian/ Pacific Islander	0	0.0%
Two or More Races	588	2.3%
Total Population	25,986	100%

**Data may not sum exactly due to rounding.*

► DISTRICT DEMOGRAPHICS

HISPANIC/LATINO CITIZEN VOTING AGE POPULATION ESTIMATES



Population	CVAP 2015-2019	
	Total	%
Hispanic/Latino	1,988	7.7%
White	19,685	75.8%
Black/ African American	180	0.7%
American Indian/Alaska Native	15	0.1%
Asian	3,530	13.6%
Native Hawaiian/ Pacific Islander	0	0.0%
Two or More Races	588	2.3%
Total Population	25,986	100%

**Data may not sum exactly due to rounding.*



PREVIOUS SCENARIOS



▶ DISTRICT DEMOGRAPHICS

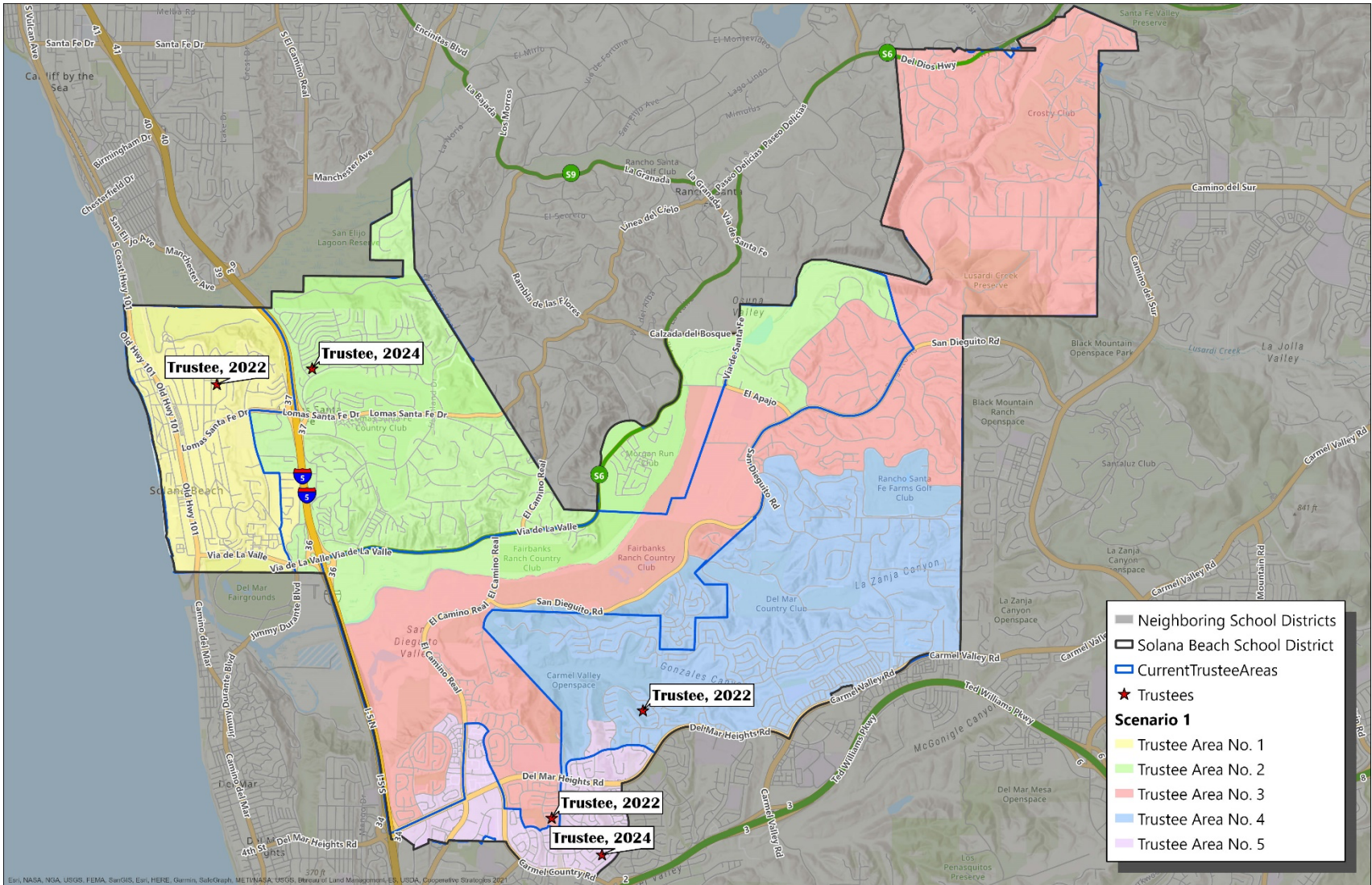
SCENARIO 1



- Scenario 1 was drawn in consideration of:
 - Balancing out the populations in all Trustee Areas .
 - Making the fewest adjustments necessary to reduce the variance below 10%.
 - Respecting incumbency.
- Scenario 1 reduced the population in Trustee Area 4 largely by expanding Trustee Area 3 into Trustee Area 4
- Trustee Area 2 increased its population by expanding into Area 3.
- Trustee Area 1 increased its population by expanding into Area 2.
- Trustee Area 5 expands into Trustee Areas 3 and 4.
- Overall variance decreased from 51.4% to 6.0%

Trustee Area	2020 Census		Scenario 1	
	Total	Variance	Total	Variance
Trustee Area 1	7,539	-9.0%	8,218	-0.8%
Trustee Area 2	8,218	-0.8%	8,028	-3.1%
Trustee Area 3	7,764	-6.3%	8,527	2.9%
Trustee Area 4	11,088	33.8%	8,479	2.3%
Trustee Area 5	6,831	-17.6%	8,188	-1.2%
Total	41,440	51.4%	41,440	6.0%

▶ CONCEPTUAL TRUSTEE AREAS SCENARIO 1



► **DEMOGRAPHICS**
SCENARIO 1

Total Population:	41,440	Ideal Trustee Area Size:	8,288	Variance:	6.0%
--------------------------	---------------	---------------------------------	--------------	------------------	-------------

TRUSTEE AREA	Trustee Area 1		Trustee Area 2		Trustee Area 3		Trustee Area 4		Trustee Area 5	
	TP	CVAP	TP	CVAP	TP	CVAP	TP	CVAP	TP	CVAP
Population	8,218	6,382	8,028	5,903	8,527	4,956	8,479	4,133	8,188	4,612
Population Variance	-0.8%	N/A	-3.1%	N/A	2.9%	N/A	2.3%	N/A	-1.2%	N/A
Hispanic/Latino	17.4%	12.7%	8.2%	5.1%	8.5%	7.0%	6.6%	6.8%	7.8%	5.3%
White	72.8%	81.4%	79.5%	85.0%	64.5%	76.2%	45.9%	61.3%	57.6%	68.6%
Black/African American	0.6%	1.0%	0.5%	0.5%	0.5%	0.6%	0.8%	0.0%	0.6%	1.1%
American Indian/Alaska Native	0.2%	0.2%	0.1%	0.1%	0.1%	0.0%	0.0%	0.0%	0.0%	0.0%
Asian	3.6%	3.6%	6.1%	7.5%	20.5%	13.7%	40.8%	28.3%	27.5%	22.0%
Native Hawaiian/Other Pacific Islander	0.0%	0.0%	0.0%	0.0%	0.1%	0.0%	0.1%	0.0%	0.0%	0.0%
Other	0.6%	N/A	0.6%	N/A	0.7%	N/A	0.6%	N/A	0.9%	N/A
Two or More Races	4.7%	1.1%	4.9%	1.8%	5.1%	2.4%	5.2%	3.7%	5.6%	3.0%

*Data may not sum exactly due to rounding.

► DISTRICT DEMOGRAPHICS

SCENARIO 3

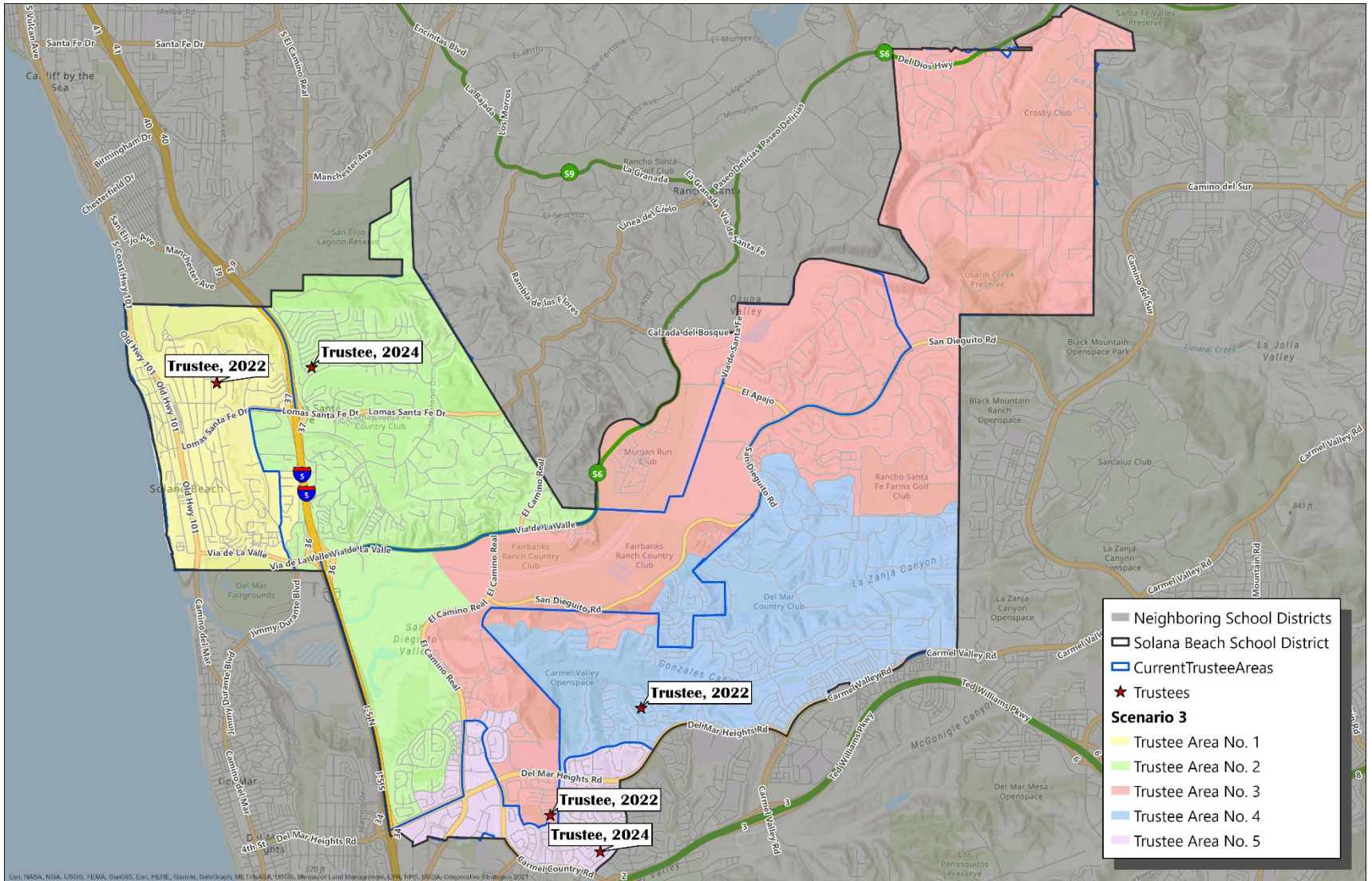


- Scenario 3 was drawn in consideration of:
 - Balancing out the populations in all Trustee Areas.
 - Making Trustee Areas 2 and 3 more compact.
 - Reducing the variance below 10%.
 - Respecting incumbency.
- Scenario 3 reduced the population in Trustee Area 4 largely by expanding Trustee Area 3 into Areas 2 and 4.
- Trustee Area 2 increased in population by expanding into Area 3.
- Trustee Area 5 increased in population by expanding into Area 3 as well.
- Overall variance decreases from 51.4% to 3.5%.

Trustee Area	2020 Census		Scenario 3	
	Total	Variance	Total	Variance
Trustee Area 1	7,539	-9.0%	8,218	-0.8%
Trustee Area 2	8,218	-0.8%	8,145	-1.7%
Trustee Area 3	7,764	-6.3%	8,312	0.3%
Trustee Area 4	11,088	33.8%	8,334	0.6%
Trustee Area 5	6,831	-17.6%	8,431	1.7%
Total	41,440	51.4%	41,440	3.5%

▶ CONCEPTUAL TRUSTEE AREAS

SCENARIO 3



► **DEMOGRAPHICS**
SCENARIO 3

Total Population:	41,440	Ideal Trustee Area Size:	8,288	Variance:	3.5%
--------------------------	---------------	---------------------------------	--------------	------------------	-------------

TRUSTEE AREA	Trustee Area 1		Trustee Area 2		Trustee Area 3		Trustee Area 4		Trustee Area 5	
	TP	CVAP	TP	CVAP	TP	CVAP	TP	CVAP	TP	CVAP
Population	8,218	6,382	8,145	6,132	8,312	4,789	8,334	3,992	8,431	4,691
Population Variance	-0.8%	N/A	-1.7%	N/A	0.3%	N/A	0.6%	N/A	1.7%	N/A
Hispanic/Latino	17.4%	12.7%	8.0%	5.1%	8.5%	7.2%	6.6%	6.7%	7.9%	5.3%
White	72.8%	81.4%	77.7%	84.2%	66.6%	76.8%	45.3%	60.8%	57.6%	68.6%
Black/African American	0.6%	1.0%	0.6%	0.7%	0.6%	0.4%	0.7%	0.1%	0.6%	1.1%
American Indian/Alaska Native	0.2%	0.2%	0.2%	0.0%	0.0%	0.0%	0.0%	0.0%	0.0%	0.0%
Asian	3.6%	3.6%	7.8%	8.1%	18.6%	13.1%	41.5%	29.1%	27.5%	21.7%
Native Hawaiian/Other Pacific Islander	0.0%	0.0%	0.0%	0.0%	0.1%	0.0%	0.1%	0.0%	0.0%	0.0%
Other	0.6%	N/A	0.7%	N/A	0.6%	N/A	0.6%	N/A	0.8%	N/A
Two or More Races	4.7%	1.1%	5.0%	1.9%	5.0%	2.4%	5.2%	3.3%	5.6%	3.3%

*Data may not sum exactly due to rounding.

A row of yellow school buses is parked in a grassy field under a cloudy sky. A large, stylized, semi-transparent 'S' graphic is overlaid on the image, framing the text. The text 'NEW SCENARIOS' is centered within the 'S' in a white, sans-serif font.

NEW SCENARIOS

► DISTRICT DEMOGRAPHICS

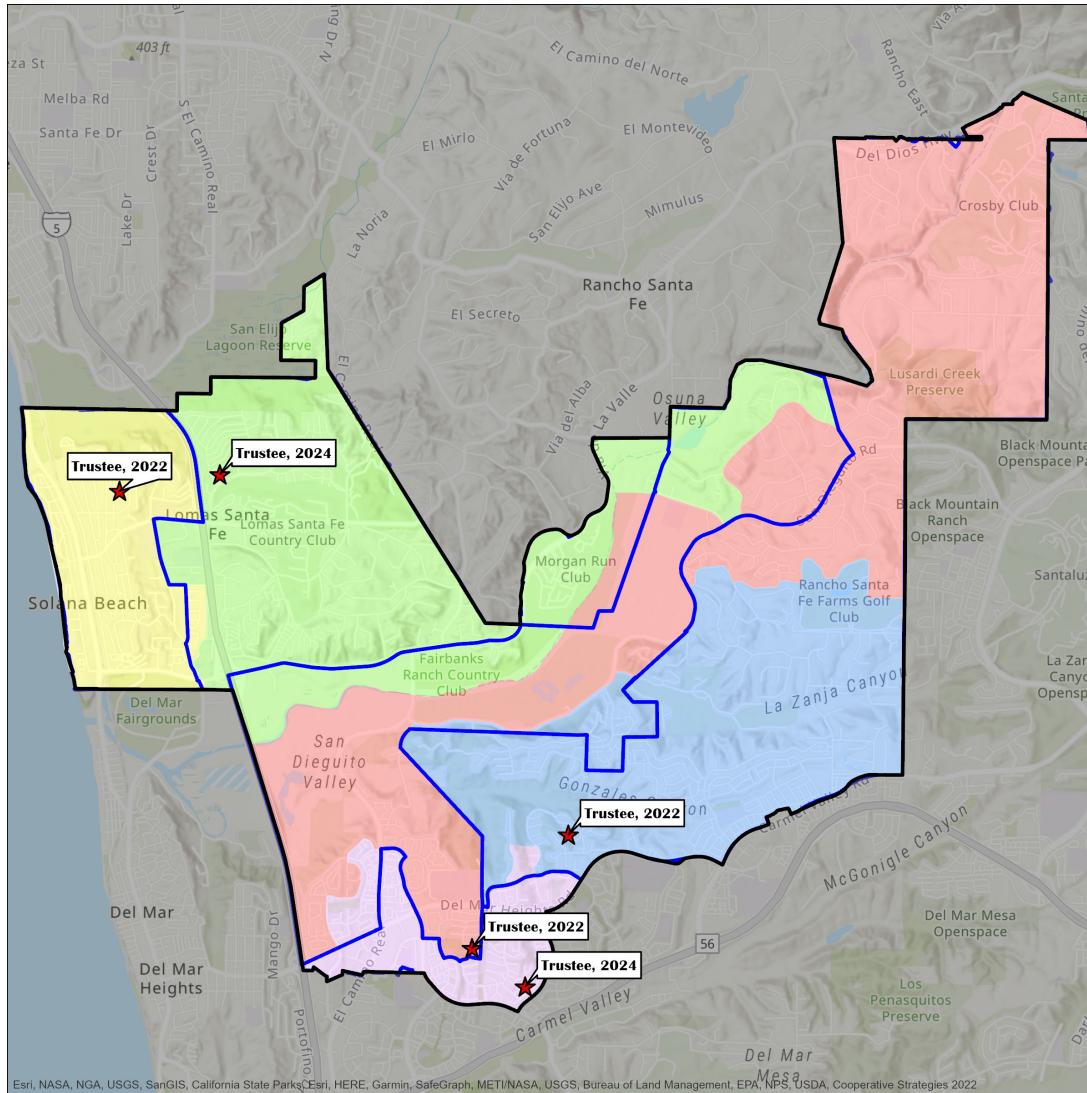
SCENARIO 1A



- Scenario 1 was drawn in consideration of:
 - Balancing out the populations in all Trustee Areas .
 - Making the fewest adjustments necessary to reduce the variance below 10%.
 - Respecting incumbency.
- Changes to produce Scenario 1A
 - Solana Highlands ES and part of the neighborhood in that area were moved from TA3 into TA5.

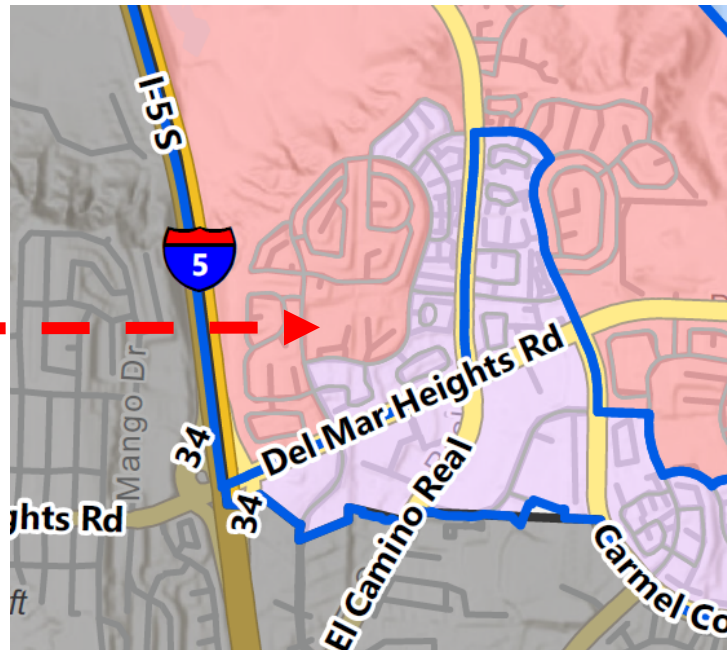
Trustee Area	2020 Census		Scenario 1A	
	Total	Variance	Total	Variance
Trustee Area 1	7,539	-9.0%	8,218	-0.8%
Trustee Area 2	8,218	-0.8%	8,028	-3.1%
Trustee Area 3	7,764	-6.3%	8,297	0.1%
Trustee Area 4	11,088	33.8%	8,479	2.3%
Trustee Area 5	6,831	-17.6%	8,418	1.6%
Total	41,440	51.4%	41,440	5.4%

▶ CONCEPTUAL TRUSTEE AREAS SCENARIO 1A

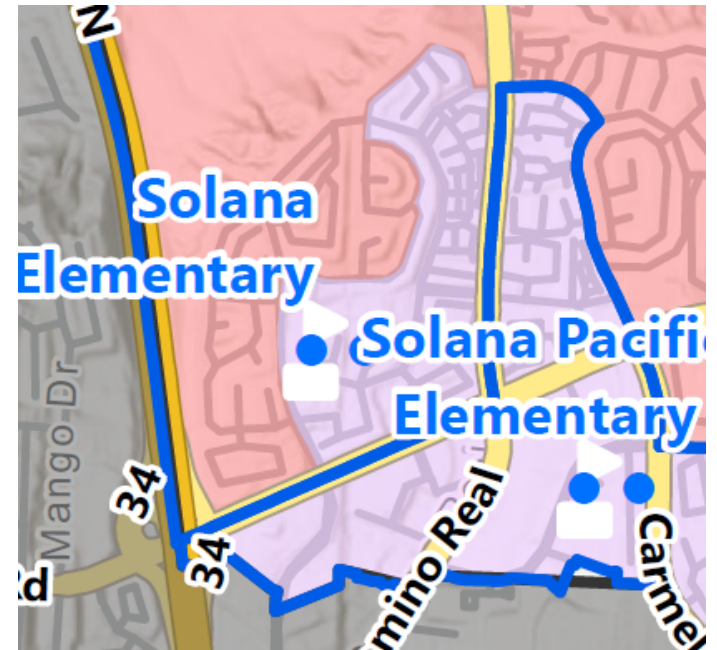


▶ CONCEPTUAL TRUSTEE AREAS
CHANGES FROM SCENARIO 1 TO SCENARIO 1A

SCENARIO 1



SCENARIO 1A



► **DEMOGRAPHICS**
SCENARIO 1A

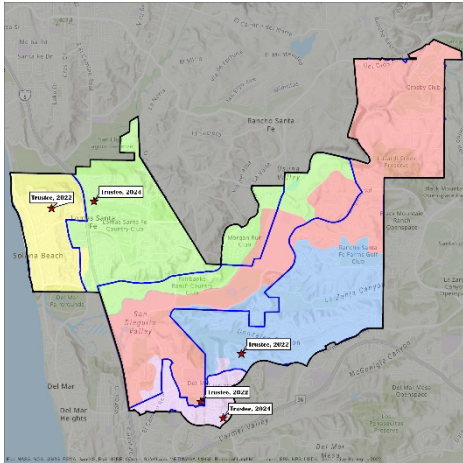
Total Population:	41,440	Ideal Trustee Area Size:	8,288	Variance:	5.4%
--------------------------	---------------	---------------------------------	--------------	------------------	-------------

TRUSTEE AREA	Trustee Area 1		Trustee Area 2		Trustee Area 3		Trustee Area 4		Trustee Area 5	
	TP	CVAP	TP	CVAP	TP	CVAP	TP	CVAP	TP	CVAP
Population	8,218	6,382	8,028	5,903	8,297	4,782	8,479	4,133	8,418	4,786
Population Variance	-0.8%	N/A	-3.1%	N/A	0.1%	N/A	2.3%	N/A	1.6%	N/A
Hispanic/Latino	17.4%	12.7%	8.2%	5.1%	8.5%	7.1%	6.6%	6.8%	7.8%	5.3%
White	72.8%	81.4%	79.5%	85.0%	64.2%	76.2%	45.9%	61.3%	58.1%	68.9%
Black/African American	0.6%	1.0%	0.5%	0.5%	0.5%	0.5%	0.8%	0.0%	0.6%	1.1%
American Indian/Alaska Native	0.2%	0.2%	0.1%	0.1%	0.1%	0.0%	0.0%	0.0%	0.0%	0.0%
Asian	3.6%	3.6%	6.1%	7.5%	20.6%	13.7%	40.8%	28.3%	27.2%	21.7%
Native Hawaiian/Other Pacific Islander	0.0%	0.0%	0.0%	0.0%	0.1%	0.0%	0.1%	0.0%	0.0%	0.0%
Other	0.6%	N/A	0.6%	N/A	0.7%	N/A	0.6%	N/A	0.9%	N/A
Two or More Races	4.7%	1.1%	4.9%	1.8%	5.2%	2.4%	5.2%	3.7%	5.5%	3.0%

**Data may not sum exactly due to rounding.*

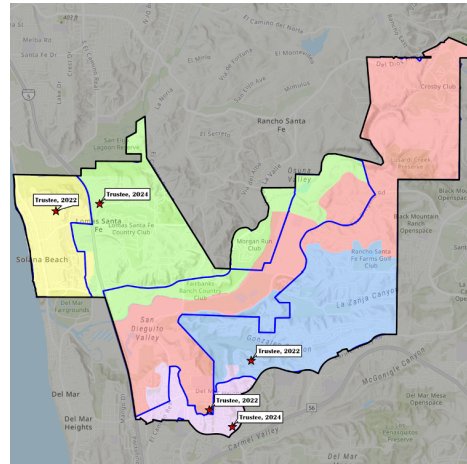
▶ CONCEPTUAL TRUSTEE AREAS

SCENARIO 1



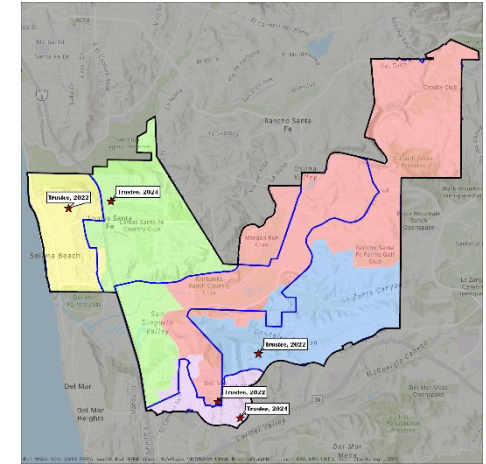
VARIANCE: 6.0%
Asian CVAP in Trustee
Area 4 – 28.3%
(Current: 23.2%)

SCENARIO 1A



VARIANCE: 5.4%
Asian CVAP in Trustee
Area 4 – 28.3%
(Current: 23.2%)

SCENARIO 3



VARIANCE: 3.5%
Asian CVAP in Trustee
Area 4 – 29.1%
(Current: 23.2%)

▶ TIMELINE

DATE	ACTIVITY
January 20, 2022	Board Meeting: Presentation on Evaluation of Existing Voting Areas Review Initial Scenarios
January – February 2022	Cooperative Strategies revises scenarios based on Board and Public Input.
February 7, 2022	Draft Maps Posted to District Website Communication to Families Regarding Upcoming Board meeting on this topic
February 10, 2022	Board Meeting: Review Proposed and New Scenarios Adopt Final Trustee Area Map
	Cooperative Strategies sends Final Trustee Area Map to the County Registrars of Voters



QUESTIONS/ACTION